

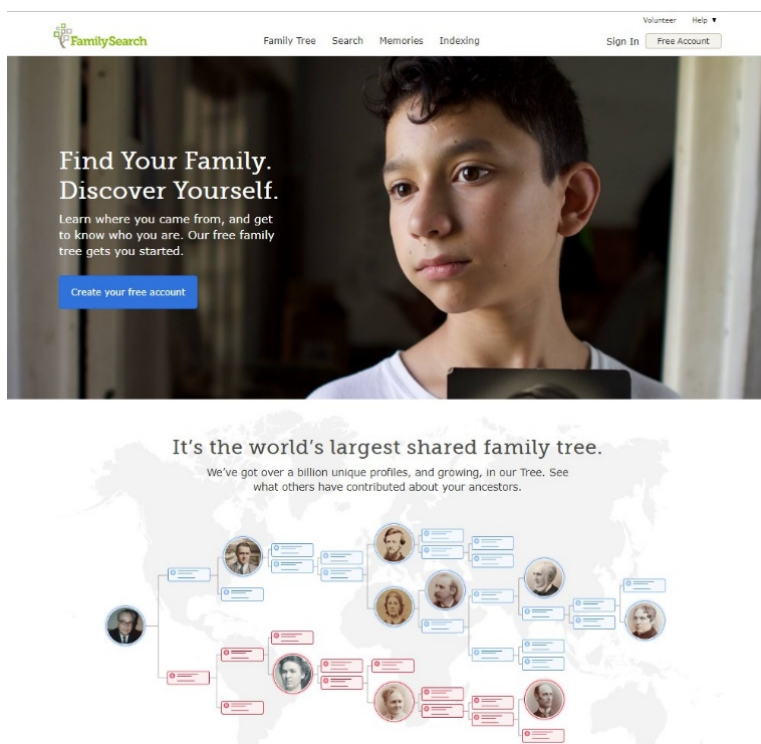


Overview of FamilySearch.org

This class is a basic introduction to familysearch.org.

GOALS

1. Explain FamilySearch.org essentials.
2. Address questions you might encounter when trying to improve or extend your pedigree in Family Tree.
3. Show resources in FamilySearch that will help you find answers to those questions.



SIGN IN/JOIN FOR FREE

- Free Account: To register for an account.
- Sign In: Must sign in to use the tree and some other resources.
- User name and password - REMEMBER for future "sign ins".
- Settings: To manage your account.

FAMILY TREE

One worldwide pedigree. This allows you to collaborate with others and make an accurate and more complete pedigree and family genealogy.

There are two main pages: The **Tree page** and the **Person Details page**.

Tree View: 4 views. [Landscape](#), [Portrait](#), [Fan Chart](#), [Descendancy](#)

Show: Allows you to choose which features to show in the Tree view.

Person: Shows person's Life Sketch, Vital Information, Other Information, Family Members, Sources, Discussions, and Notes

Timeline: This is a new feature that helps establish a timeline of events in your ancestor's lives.

It is based on information already in the Family Tree.

MEMORIES

- Photos, Stories, and Documents may be added to any of your family members.
- You may now submit Audio recordings.
- You may organize your pictures into families by using the Album tab.
- Photos of family members that others have contributed may be found under the People tab.
- Documents may be added to a person's memories and then the image attached to a source.
- Stories will endear the hearts of others to these family members.
- Find will allow you to search for Photos, Stories and Documents

SEARCH

Records

There are various ways to search:

- General record search without filters.
- Restrict (filter) records by:
 - Specific Location (for example: United Kingdom and Ireland).
 - Record Type: Birth, Baptism, Marriage, Death, Census, Military, Probate, etc.
 - Batch Number: Indexes are compiled and assigned a batch number. This is an alphabetical surname listing of the specific record. These indexes can be complete or partial.
 - Film Number: Indexes are compiled and assigned a film number. This is an alphabetical surname listing of the record or records on a microfilm. These indexes can be complete or partial.
- Search with a life event (birth, marriage, death, any). You may need to filter your results to get what you want.

- Search with a Relationship: Search by individual, parents, spouse, and other person from a document. This search is under-utilized.
- Research By Location: Click an area of the world to start researching in a specific location
- Find a Collection: to research a specific record collection enter the name of the collection
- Browse all published collections: Click this link to see all of the record collections

Genealogies

- Ancestral File
- Pedigree Resource File and
- Other patron or organization submitted trees and projects (Community Trees).

Catalog

- Search the catalog of genealogical materials (including books, online materials, microfilm, microfiche, and publications) made available by FamilySearch.
- The catalog is continuously being updated. Indexes that are not online can be found. Many Images can be accessed online.
- Searches can be made by: Places, Surnames, Title, Author, Keyword (under-utilized), (Family History Library) Call Number, and Film Number.
- Use the links to other catalogs: OCLC WorldCat, Archive Grid.

Books

- Family History Books is a collection of more than 200,000 digitized genealogy and family history publications from the archives of some of the most important family history libraries in the world. The collection includes family histories, county and local histories, genealogy magazines and how-to books, gazetteers, and medieval histories and pedigrees.

Wiki

- Get great research advice, or learn where to find record collections in over 89,000 articles.
- Genealogical knowledge contributed by the community, like Wikipedia.

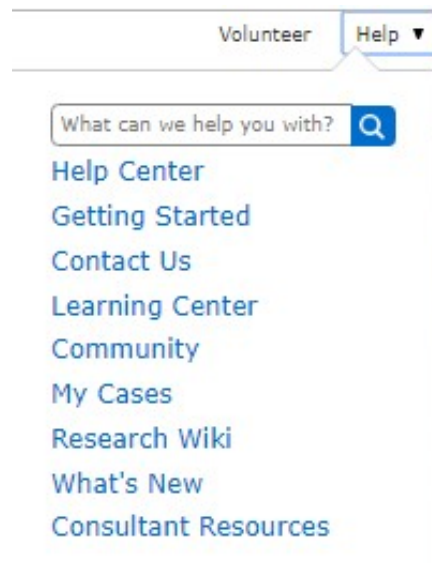
INDEXING

- Indexing results in a computer searchable index that makes finding the records easier for everyone.
- More volunteers are needed to increase the number of indexed records.

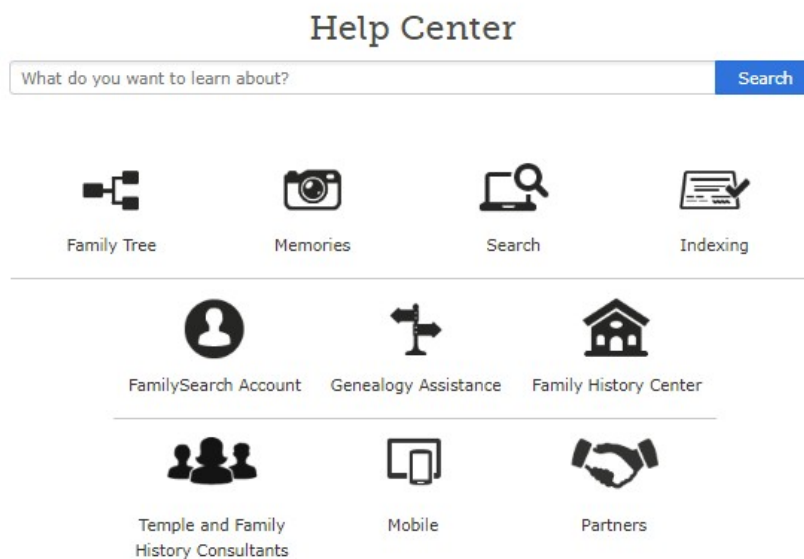
VOLUNTEER

- Find many ways you can use your talents and skills to help and assist in this genealogical work.

GET HELP



- **Getting Started:** Suggestions on getting started.
- **Help Center:** Help with any questions you might have concerning family tree, memories, search, indexing, family search account, genealogy assistance or family history centers.



- **Learning Center:** Browse hundreds of genealogy courses to help you discover your family history.
- **Contact Us:** Live Chat, Call Us, Send Message, Find Local Help, Visit Family History Library.

Tips: If you ever get lost while on familysearch.org, click the FamilySearch logo and it will return you to the home page.